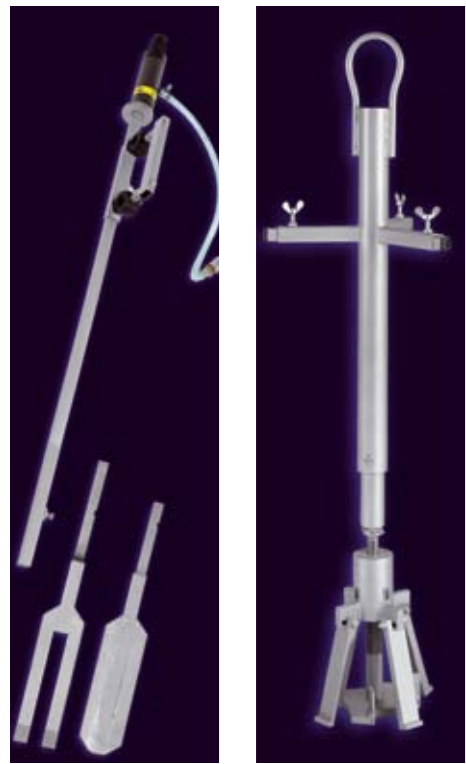


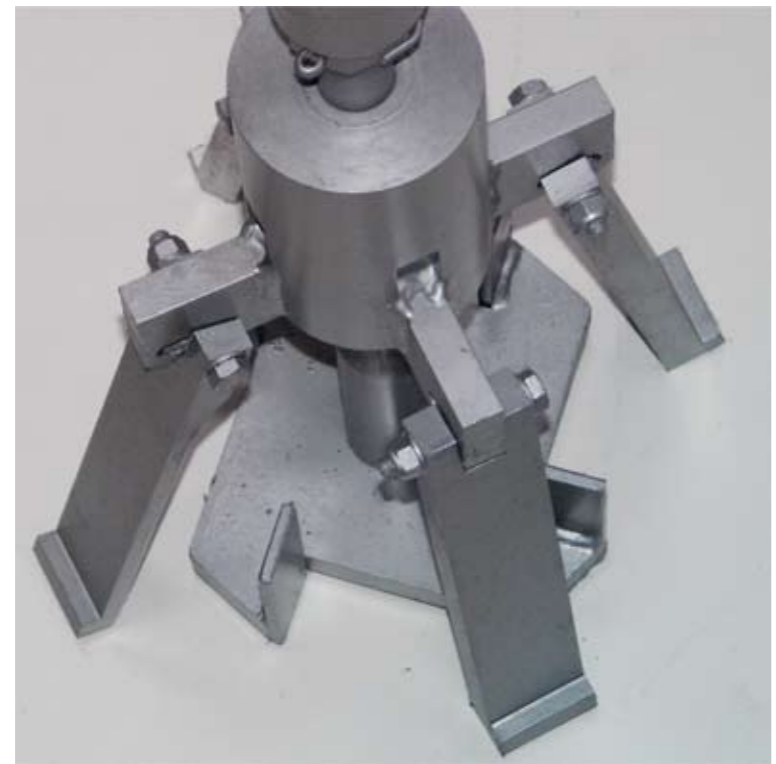
Lining tools for DORIT prefabricated crucibles



Pic. 1: Backup Mix Vibrator

The vibrator is to use for the compaction of the hole mix and the back up mix. Furthermore the vibrator can be used for the pre compaction of the cone and side wall area by a conventional lining.

We produce DORIT prefabricated crucibles to your specific requirements.



Pic. 2: Crucible lifting device

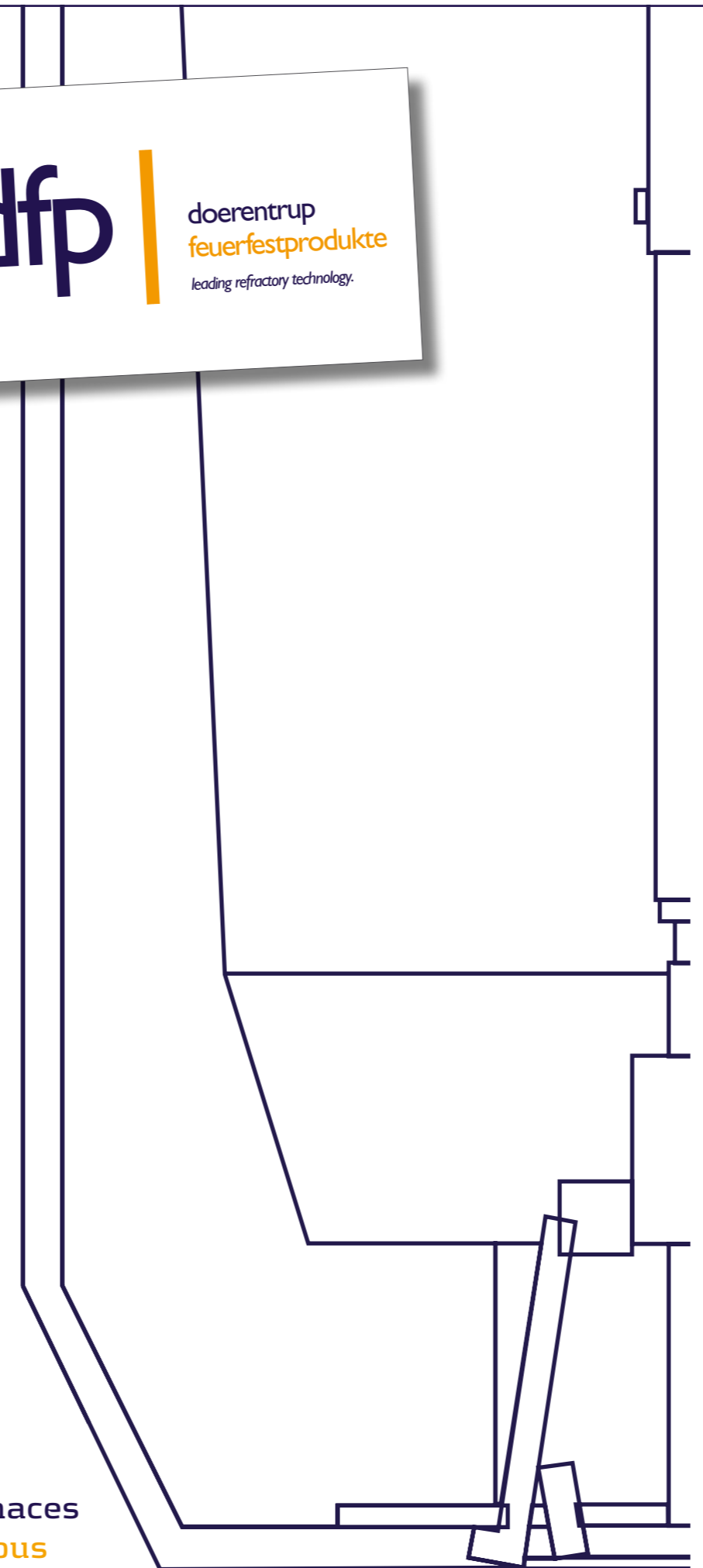
The lifting device is to use for the transport and installation of the prefabricated crucible.



Pic. 3: Crucible lifting device with claw

If there is not a push out system available you can use this tool to lift the crucible out of the furnace.

DORIT prefabricated crucible furnaces for coreless induction furnaces
Iron / Steel / Non Ferrous



2011016 www.trailbreaker.de

Döerentrup Feuerfestprodukte GmbH & Co. KG

Lemgoer Straße 9
D-32694 Döerentrup

T: +49 5265 - 7160
F: +49 5265 - 7161

info.dfp@doerentrup.de
www.doerentrup.de

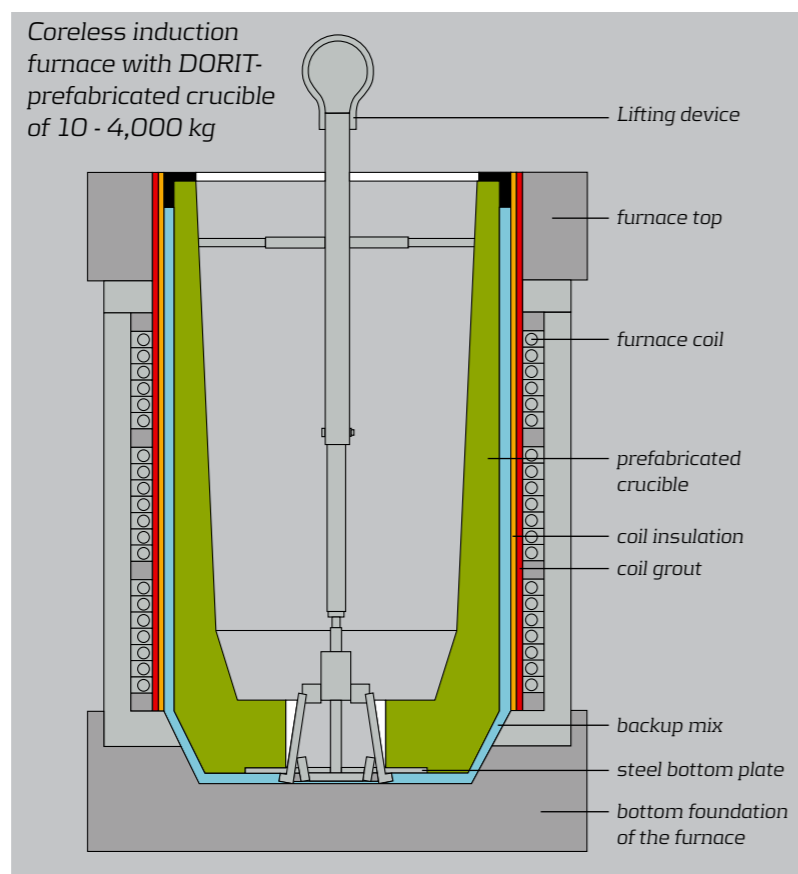
All advantages at a glance:

In addition to their numerous advantages, the ready to install DORIT prefabricated crucibles also stand for highly economic efficiency:

Mounting Time:
Using a DORIT prefabricated crucible means distinctly reducing both mounting time and startup of the induction furnace compared to conventional lining.

Removal Time:
DORIT prefabricated crucibles are designed for substantially reduced removal times enabling much faster availability while ensuring a significant productivity increase of the melting unit.

Environmental and Workplace Aspects:
DORIT prefabricated crucibles are engineered to reduce the impact of dust intensive break-out works to the furnace and to effectively decrease the workplace environmental exposure level.



The Mounting: Fast and Simple.



The furnace is to clean and the coil grout is to check



Before inserting the Dorit prefabricated crucible, first install the insulation and the floor-molded bed for the crucible.



Then insert the DORIT prefabricated crucible by using a lifting device.



Remove the lifting device.



Align the bottom antenna



Lifting device without steel bottom plate

Putting into operation: Ready within 3 hours!



Inductively with starting block or lumpy material

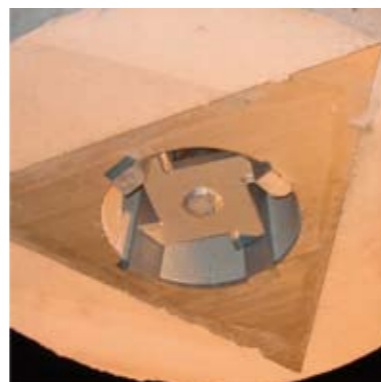
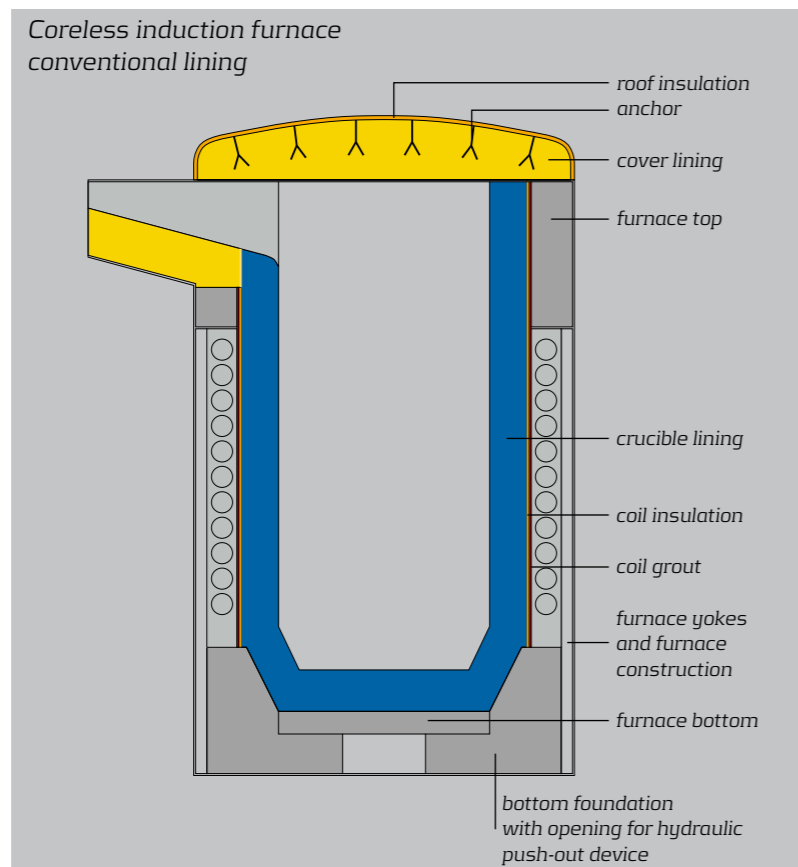
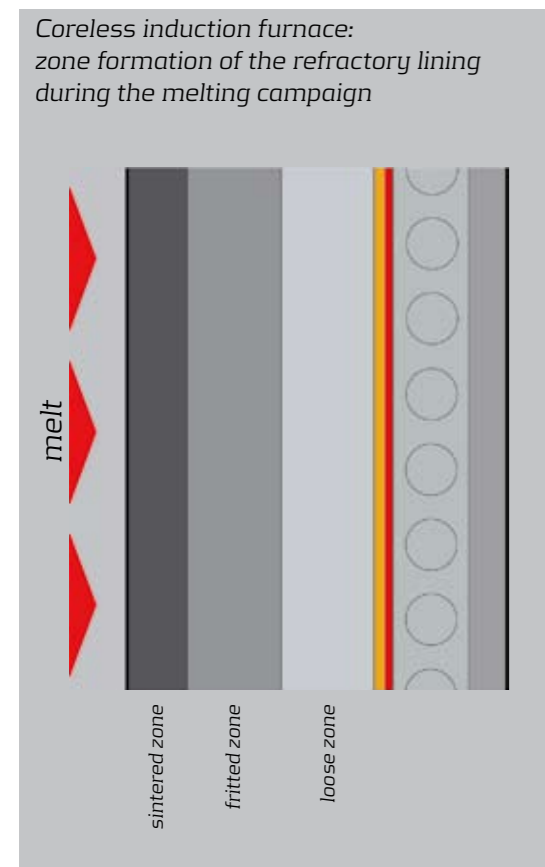


With burner and liquid sintering



Prefabricated shapes:

dfp offers a big selection of prefabricated shapes. We produce customized products on request. Please contact us.



Lifting device with steel bottom plate



The prefabricated crucible is to adjust in the middle of the furnace



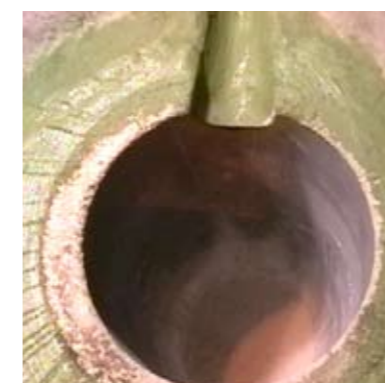
Fix the crucible with backup mix by using a backup mix vibrator.



The assembly opening is to fill with special hole mix and to vibrate.



Adjust the pouring spout according to specific use.

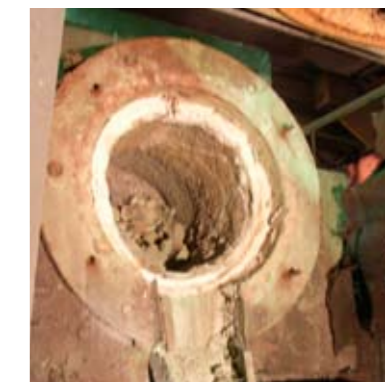


Ready for sintering

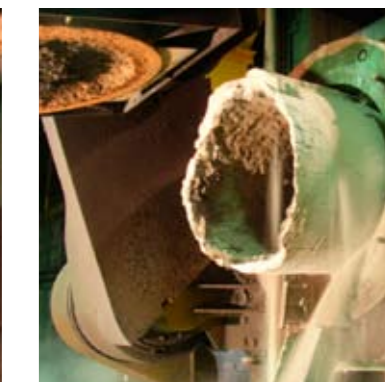
The removal: simple and efficient.



The upper ring of the crucible is to remove with an air hammer.



Ready to push out with the hydraulic push out system



The crucible is to push out

If there is not a push out system available you have to break out the middle of the crucible bottom. Afterwards you can fix the crucible lifting device under the steel bottom plate and than you can lift the finished crucible out of the furnace.

